

Assessment of GMS Economic Corridors



Scope of Presentation

- Background
- Objectives, approach and outputs
- Information provided
 - ✓ Road transport and related transport development
 - ✓ Border crossing facilities
 - ✓ Economic potential
 - ✓ GMS economic corridors' GIS database
- General findings and recommendations
- Next steps



Background

- Review of configuration of GMS economic corridors: First half of 2016
- Presentation of recommendations: STF July, and ECF in August 2016
- Adoption of recommendations with directive for the assessment: 21st GMS Ministerial Conference in December 2016



GREATER MEKONG SUBREGION
**NEW CONFIGURATION OF EAST-WEST ECONOMIC CORRIDOR,
 NORTH-SOUTH ECONOMIC CORRIDOR, AND
 SOUTHERN ECONOMIC CORRIDOR**



First Proof: 14 September 2016
 Second Proof: 15 September 2016
 Third Proof: 27 February 2017
 Fourth Proof: 25 April 2017

This map was produced by the cartography unit of the Asian Development Bank. The boundaries, colors, denominations, and any other information shown on this map do not imply, on the part of the Asian Development Bank, any judgment on the legal status of any territory, or any endorsement or acceptance of such boundaries, colors, denominations, or information.



Objectives

Assess state of development of economic corridors:

- Physical condition of transport infrastructure focusing on road infrastructure
- Economic potential (cross border trade, SEZs, tourist attractions, investment opportunities)



Objectives (cont'd)

The Assessment is expected to:

- Increase appreciation of the state of development of the economic corridors
- Assist in identifying gaps, bottlenecks and priorities for interventions (inputs to RIF)
- Provide a benchmark for monitoring development of the corridors (as in TSS)



Approach and Steps Taken

- Engage national consultants: Feb/Mar '17
- Conduct country consultations: Mar/Apr '17
- Collect data and conduct field survey: May/June '17
- Prepare country reports: July/Aug '17
- Circulate drafts for review: Aug/Sep '17
- Revise country reports: Oct '17
- Prepare integrative report: Nov' 17
- Circulate integrative report for review: Dec '17



Outputs

- Six country reports
- Integrative report
- Improved and amended GMS economic corridor GIS database and maps



Assessment of Road Transport Infrastructure

Configuration

- Main sections and connections (alignment)
- Roads traversed
- Distances between sections
- Nodes



Assessment of Road Transport Infrastructure (cont'd)

State of development
(as of June 2017)

- Road class
- Number of lanes
- Physical condition
- Sections requiring repairs/upgrading
- Bottlenecks
- On-going and planned projects



Related Transport Development

- Railway
- Ports
- Dry ports
- Inland waterways



Assessment of Border Crossing Facilities

- Border control facilities (CIQ and CCA)
- Border checkpoints requiring improved border control facilities
- Cross-border trade and traffic



Economic Potential

- Investment opportunities
- Special economic zones
- Tourist attractions



Improving GMS GIS Database

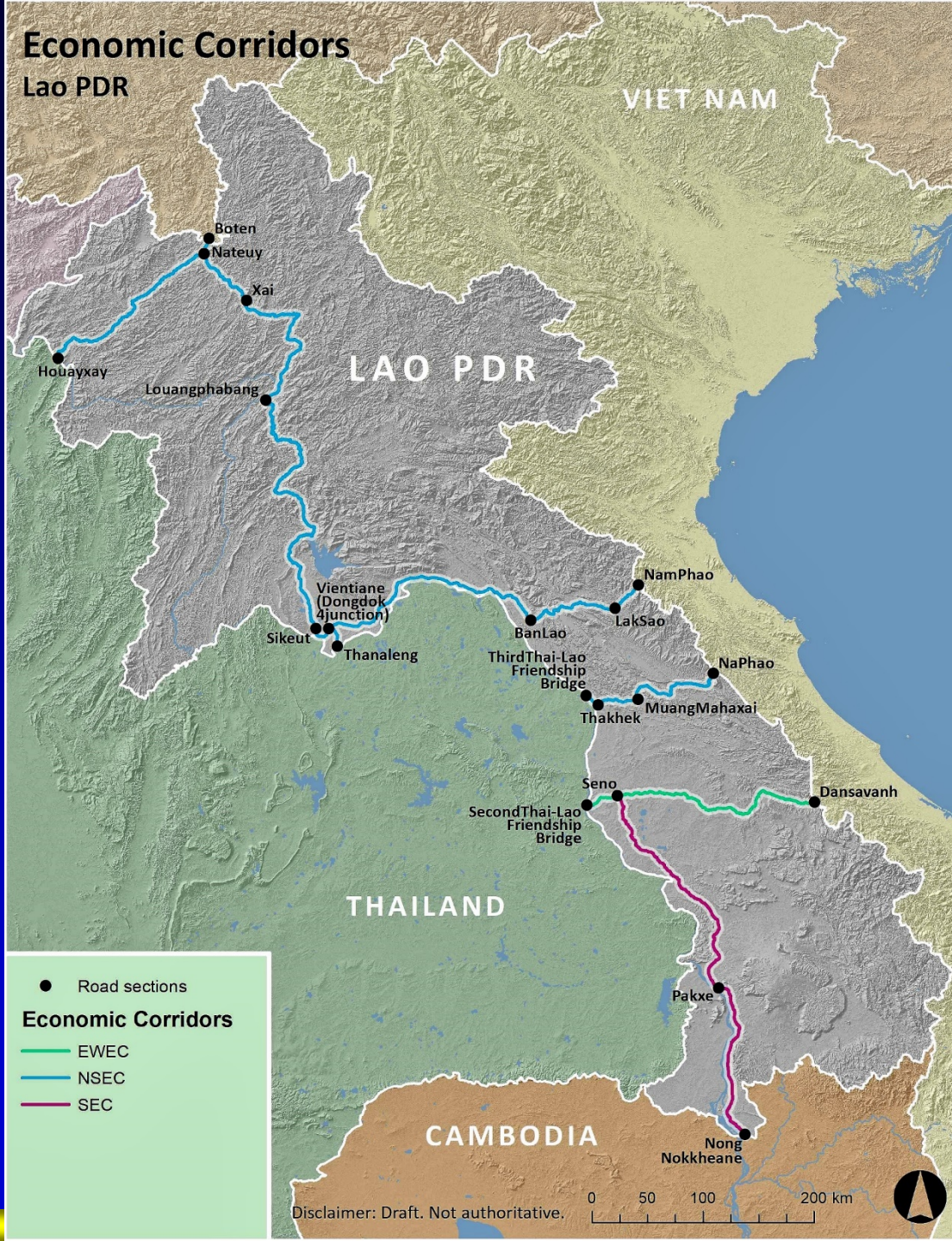
- Assessment provided information on GMS-wide road attributes not previously available
- Improvements over previous GMS GIS dataset
 - More accurate EC alignment
 - Improved geometric accuracy
 - Less generalization and more spatial detail



Economic Corridors

Lao PDR

VIET NAM



Economic Corridors

Lao PDR

VIET NAM



● Road sections

Road class

— II

— III

— Below III



Disclaimer: Draft. Not authoritative.

0 50 100 200 km



Economic Corridors

Lao PDR

VIET NAM



● Road sections

Road condition

— Good

— Fair

— Poor

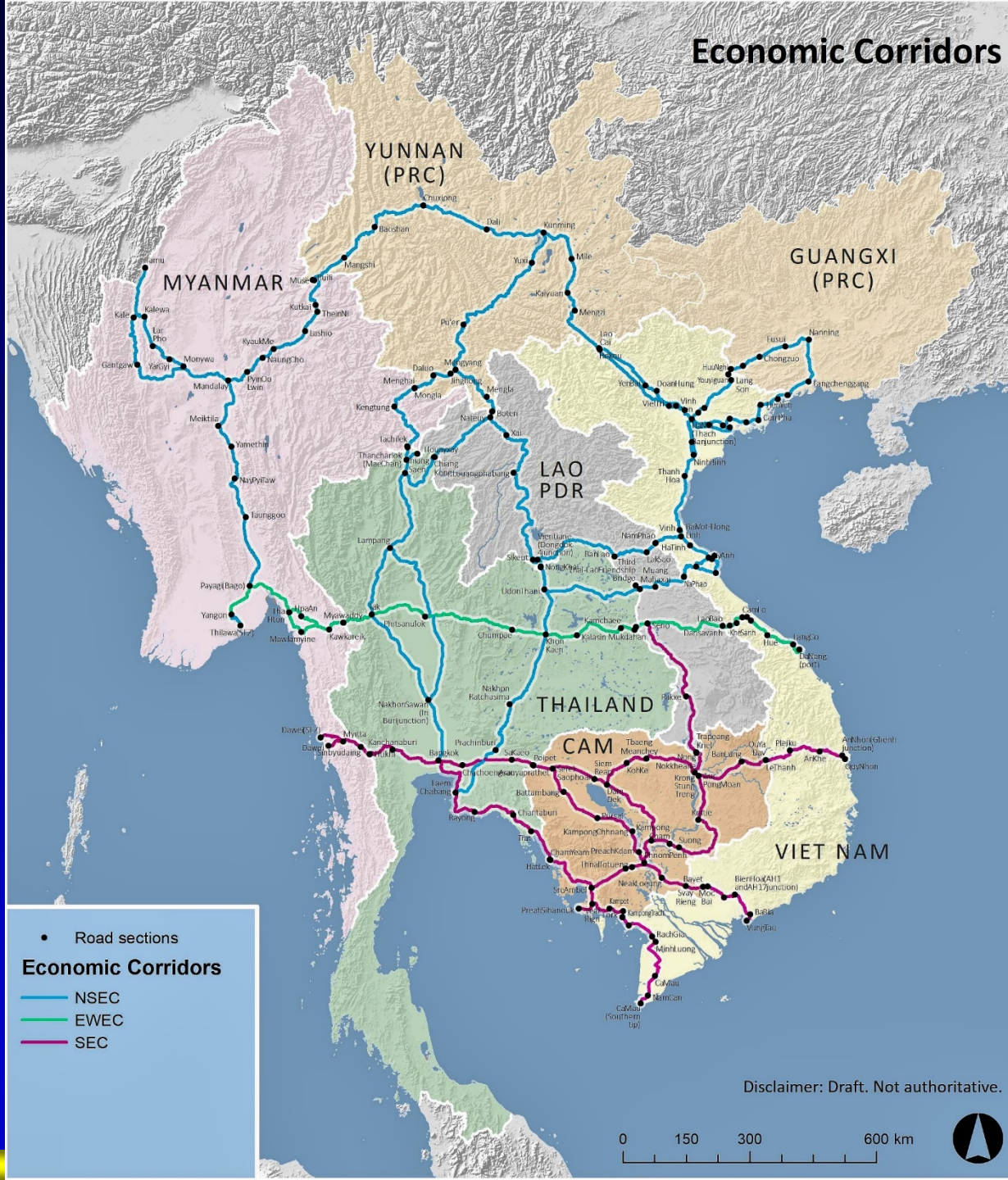


Disclaimer: Draft. Not authoritative.

0 50 100 200 km



Economic Corridors



- Road sections

Economic Corridors

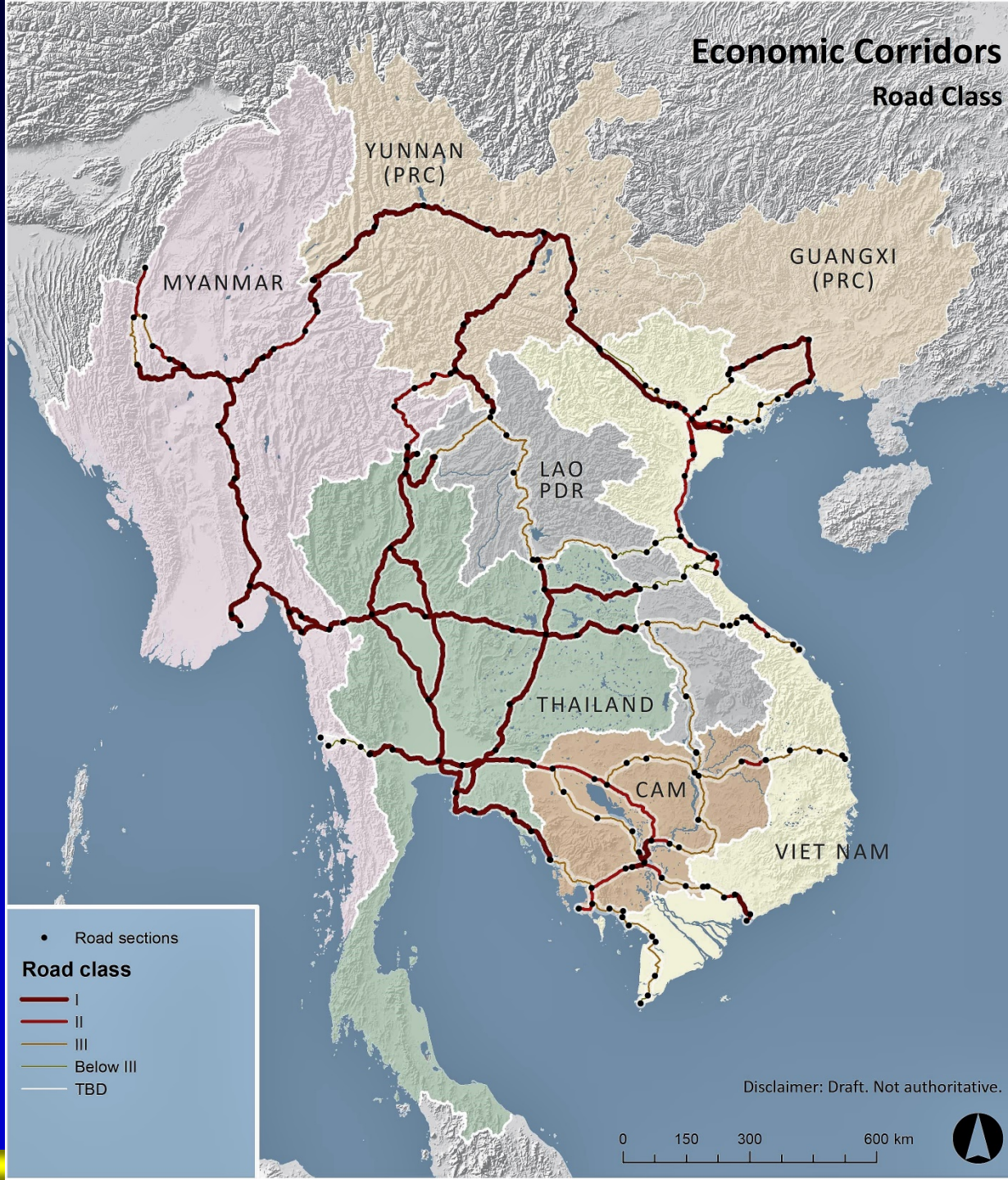
- NSEC
- EWEC
- SEC

Disclaimer: Draft. Not authoritative.



Economic Corridors

Road Class



• Road sections

Road class

- I
- II
- III
- Below III
- TBD

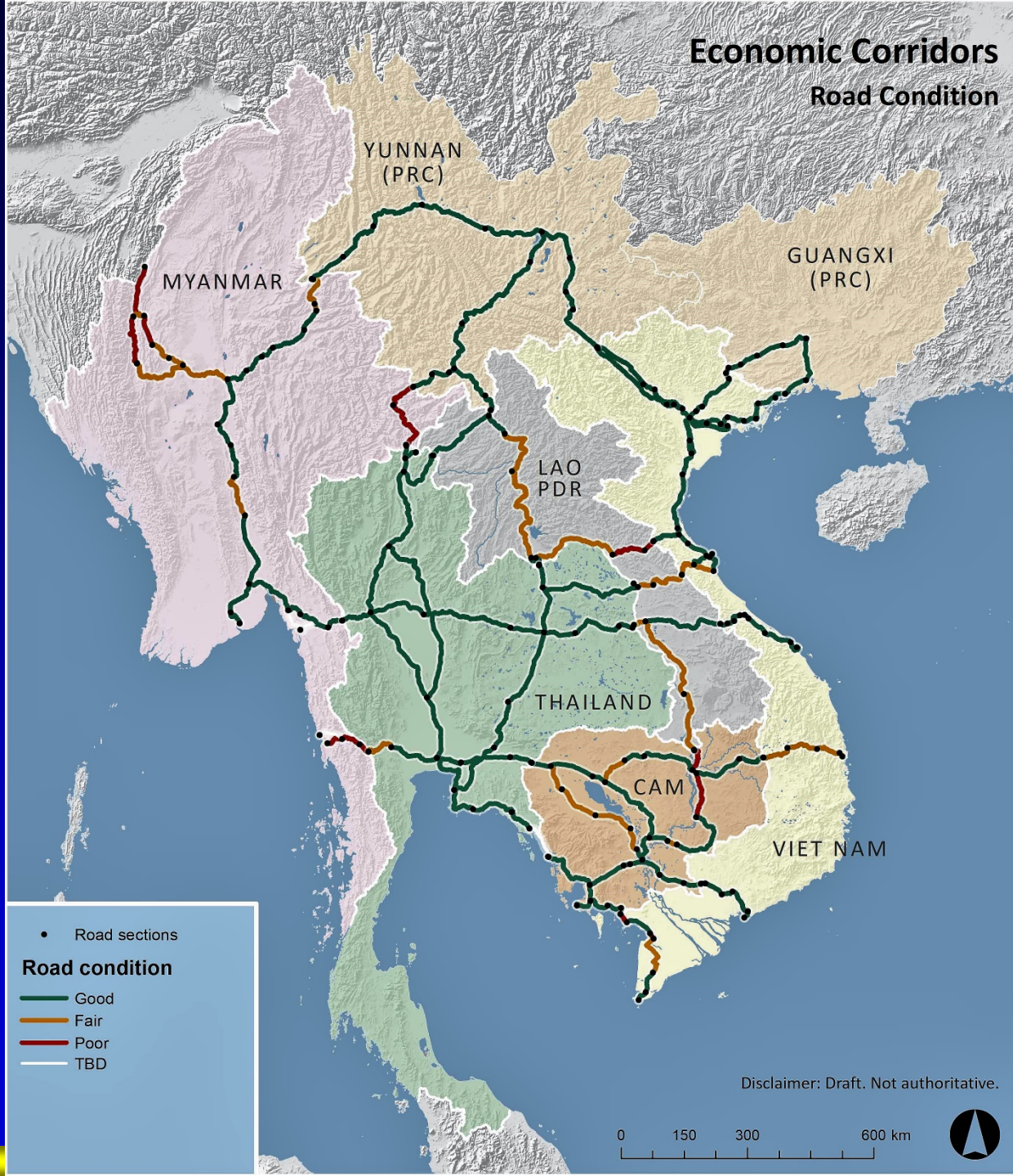
Disclaimer: Draft. Not authoritative.

0 150 300 600 km



Economic Corridors

Road Condition



• Road sections

Road condition

- Good
- Fair
- Poor
- TBD

Disclaimer: Draft. Not authoritative.



General Findings

- There is no longer any missing link along the GMS economic corridors.
- Some sections require repairs/upgrading.
- There are bottlenecks that need to be addressed (e.g., at interchanges and routes passing through cities).
- There are on-going and planned projects for upgrading some sections along the economic corridors.
- The main bottleneck in cross-border trade and traffic is at the border crossing point (in most, software; in some, both software and hardware).



Recommendations

- Expedite implementation of on-going and planned transport projects.
- Improve border crossing facilities to support cross-border trade and traffic.
- Harmonize road standards such as road design and axle load limits.
- Implement SSI/SWI in more border crossing points.
- Intensify efforts to allow transit cargo along the ECs.
- Accelerate implementation of CBTA; include new EC routes in CBTA.



Recommendations (cont'd)

- Develop intermodal links.
- Include in the agenda of STF and other GMS meetings development of dry ports and other land-based transport hubs.
- Establish a GMS economic corridor transport infrastructure database covering all modes of transport and nodes (dry ports, ICDs, river ports, seaports, and airports).



Next Steps

- Revision and finalization of the country reports and integrative report.
- Presentation of results of the assessment at the next Economic Corridors Forum.
- Publication and dissemination of the reports.



Thank you.

