

# World Bank Group Transport Engagement in Southeast Asia

June 2022



# Overview of WBG Infrastructure Engagement in EAP

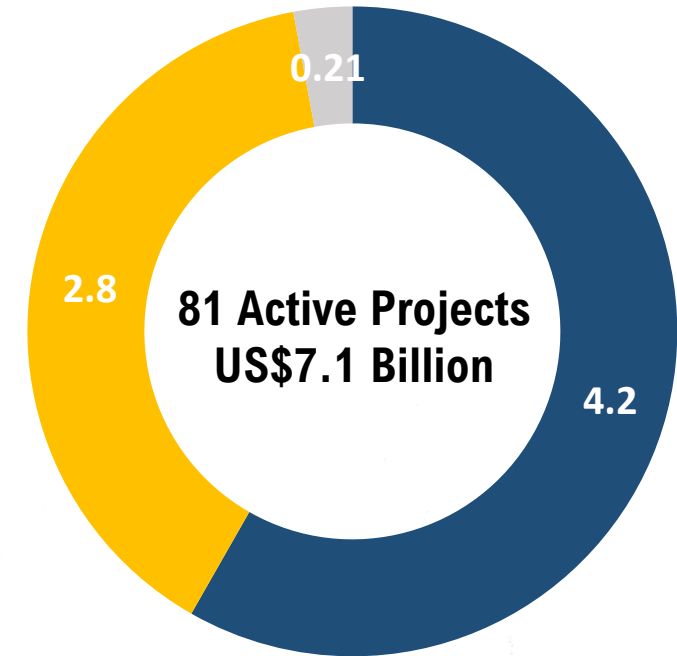
**Countries Supporting: 19**

**East Asia:** China, Mongolia

**Southeast Asia:** Cambodia, Lao PDR, Indonesia, Philippines, Vietnam, Thailand

**Pacific:** Fiji, Kiribati, Marshall Islands, Federated States of Micronesia, Papua New Guinea, Samoa, Solomon Islands, Timor-Leste, Tonga, Tuvalu, Vanuatu,

## Ongoing Portfolio



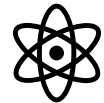
## Three Practice Groups and One Cross-Cutting Group



Transport



Energy and Extractives



Digital Development



Infrastructure, PPP and Guarantee

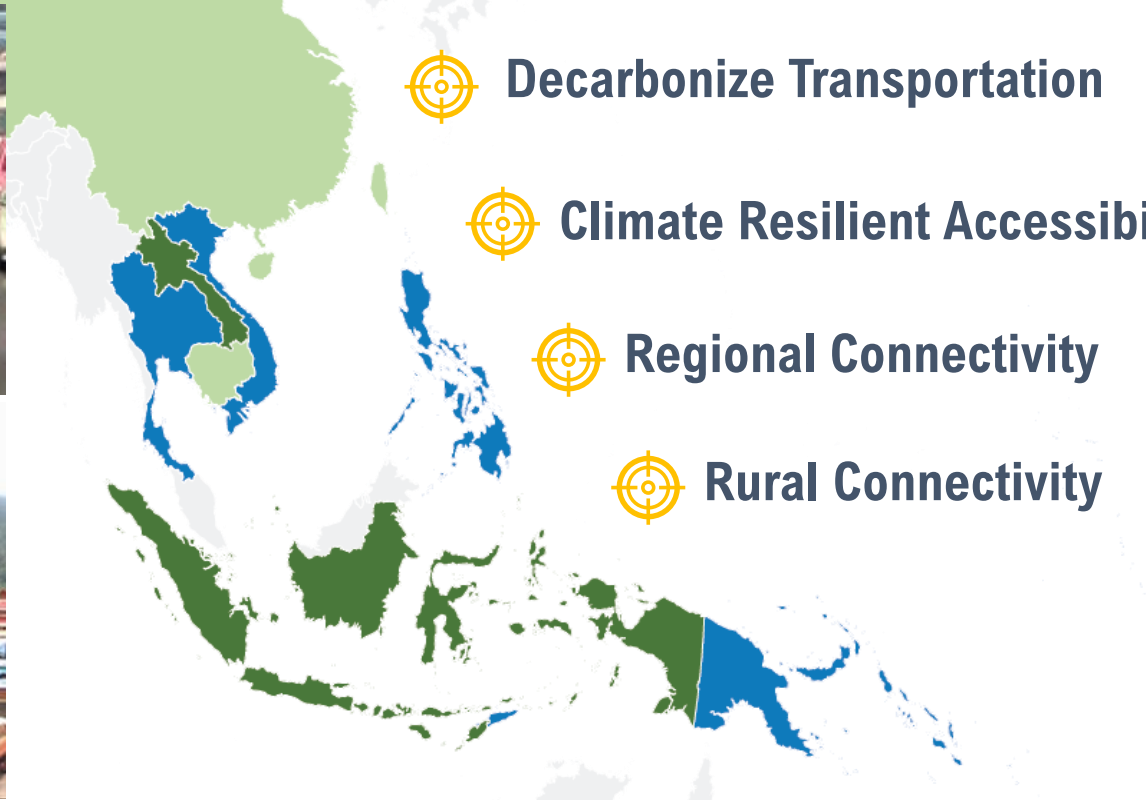




# Strategic Approach: Green, Resilient and Inclusive Development (GRID)

- COVID-19 and climate crisis have worsened extreme poverty and inequality globally
- The COVID-19 recovery cannot neglect the interdependence between people, the planet, and the economy

## Strategic Priorities for World Bank's EAP Transport Engagement under GRID



Private Capital Mobilization

# Transport Engagement in Showcase

Facilitate **regional connectivity and integration** for efficient logistics and critical lifeline supplies

Holistic policy and investment interventions around the **Avoid-Shift-Improve** principles to decarbonize the transport sector

## Southeast Asia | Regional Economic Corridor and Connectivity Project



**Financing:** US\$ 132 million

**Scope:** Upgrade Asian Highway No.13's to provide climate resilient regional connectivity and invest in dry ports and cross-border trade facilitation.

**Impact:** Filling the missing land transport linkage in the Northern part of Southeast Asia connecting Thailand, Laos, and Vietnam

## Vietnam | Southern Waterway Logistic Corridor

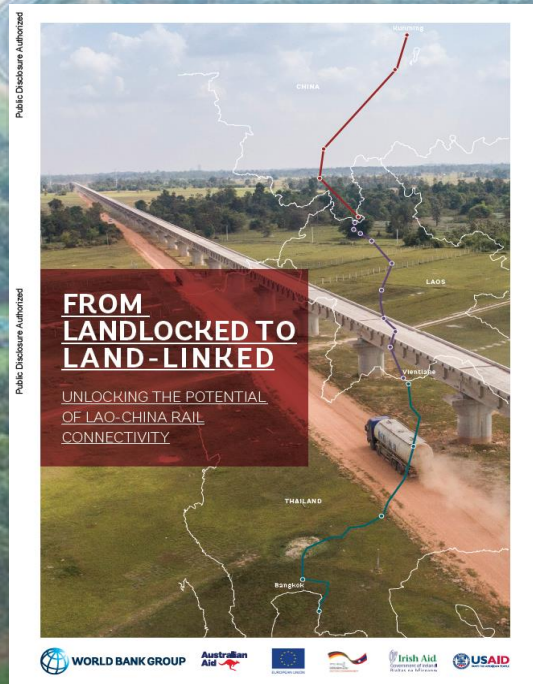


**Financing:** US\$ 107 million

**Scope:** Upgrade about 300km of waterway corridors in Vietnam's Mekong Delta

**Impact:** Improve waterway transport logistics in Vietnam and enable a portion of freight to shift from overloaded national highways





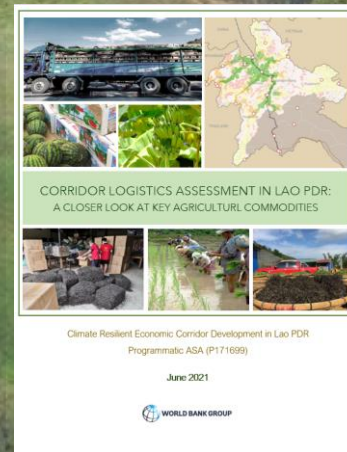
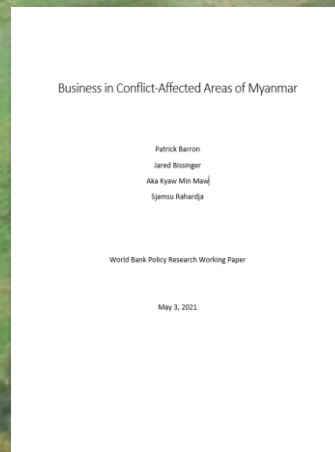
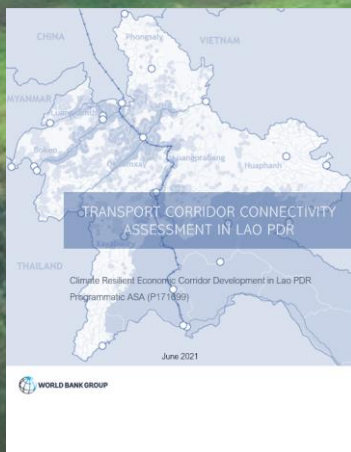
**Key objectives:** (i) understanding impacts and risks of the emerging dynamics with Lao-China Railway; (ii) analyze how SEA countries, particularly Lao PDR, can maximize their benefits through improved infrastructure and trade facilitation and (iii) inform Bank's potential financing support on regional connectivity and integration.

## Studies in FY19-20

- From Landlocked to Land-linked: Unlocking the Potential of Lao-China Rail Connectivity
- ASEAN Connectivity Pipeline

## Studies in FY21-22

- Improving Regional Connectivity along the Northern Southeast Asia Corridors
- Corridor Logistics Assessment in Lao PDR: A Closer Look at Key Agricultural Commodities
- Transport Corridor Connectivity Assessment in Lao PDR
- Conflict analysis of major border crossing between Myanmar-Laos and Myanmar-Thailand
- Green mobility for Luang Prabang and Siem Reap





# Regional Connectivity

# Analytical works proposed for FY22-24

**Key objectives: (a) continuing analytics on priority corridors considering emerging new priorities of governments and (b) offer further support to counterparts on priority areas/corridors including Vietnam, Cambodia and Lao PDR**



## Ongoing analytical work:

- Review of the priority corridors linking Vietnam, Cambodia, Lao PDR and Thailand (transport and border-crossing efficiency)
- Identify additional studies needed



## Vietnam

- Discussions ongoing on potential transport projects which includes road sections connecting with Laos and Cambodia



## Cambodia

- New analytical work to start with a focus on Cambodia's regional transport connectivity. Inform discussions with government on downstream potential engagement (new CPF, potential regional IDA)





## Key objectives:

- (i) Inform and provide cross-support within the WBG portfolio and pipeline;
- (ii) Facilitate guidelines, tools, capacity building, evidence-based and data-driven support to client countries, local stakeholders and partners;
- (iii) Through GRSF grants, generate research activities to inform and support decision-making, while filling knowledge gaps.



**Speed Management Hub, tools and Capacity Building**

## World Bank and Asian Development Bank (ADB), in partnership with APRSO, iRAP and GRSF Helping save lives from road crashes in Asia-Pacific



5-part webinar series



## Asia-Pacific Road Safety Observatory (APRSO) with ADB

23 confirmed member states, including Cambodia, Lao PDR and Philippines.

Number of countries <b>28</b>	Total population (000s) <b>4 150 386</b>
Total reported deaths <b>341 272</b>	Total WHO estimation <b>772 158</b>

## GRSF Grants in FY19

- Improving road traffic fatality data in select countries in Asia.
- BRTs and Motorcycle Ban: Comparison Study between Yangon and Mandalay regarding safety and congestion.
- Implementation of crash data collection system, supported by capacity building and research activities.
- Road Safety Management Capacity Assessments with an emphasis on crash data systems in selected countries.

## GRSF Grants in FY20-21

- Road crash data base in Cambodia.
- *Supported by Bloomberg Philanthropies:* Road Safety Assessments and Safer Road Investment Plans (SRIP) in Vietnam (NH2, NH6, NH9 and NH19) and China.
- Lao PDR- Eliminating the systemic risks of severe road trauma involving speed.