

**25th Meeting of the GMS Subregional Transport Forum
(STF-25)**

**Session 1: Progress of GMS 2030 and COVID Plan
Implementation in GMS Transport Sector**

Presentation by the Asian Development Bank
14 June 2022, Siem Reap, Cambodia

Scope of Presentation



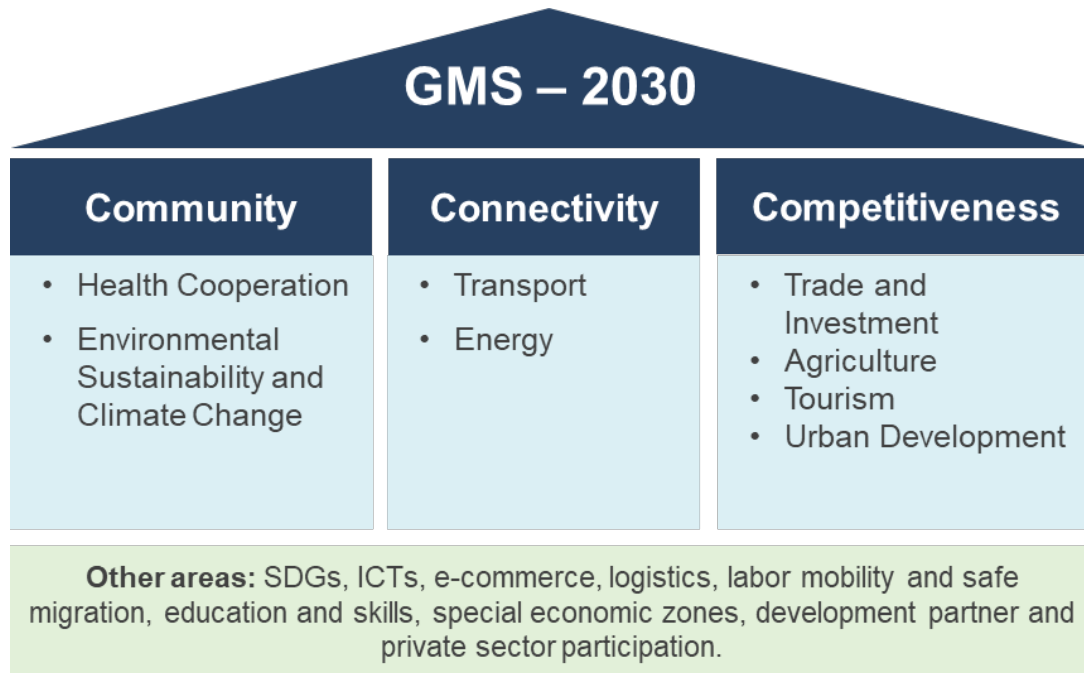
- I. GMS Program Strategic Framework 2030 (GMS 2030)**
- II. GMS 2030: Transport**
- III. GMS COVID-19 Response and Recovery Plan 2021-2023**
- IV. GMS COVID Plan: Transport**
- V. Alignment with GMS Transport Strategy 2030**
- VI. RIF 2022**
- VII. New RIF**
- VIII. Questions for guidance and discussion**

I. GMS Economic Cooperation Program Strategic Framework 2030 (GMS 2030)



Vision

“A more integrated, prosperous, sustainable, and inclusive subregion”



<https://www.adb.org/documents/gms-economic-cooperation-program-strategic-framework-2030>

Mission

“A subregional cooperation program focused on its fundamental strengths of **community, connectivity, and competitiveness**, while embracing the core principles of **environmental sustainability and resilience, internal and external integration, and inclusivity**, for building a GMS community of bright shared future.”



6 Innovative Approaches

1. Digital Revolution
2. Spatial Approach
3. Policy Dialogue
4. Private Sector
5. GMS Open Platform
6. Focus on Results



Endorsed at the 7th GMS Summit of Leaders (9 Sep. 2021)

Pillar 2: Connectivity

Vision of a seamless, efficient, reliable and sustainable GMS transport system will be realized by:

- prioritizing intermodal approaches
- facilitating cross-border transport
- seeking improvement in logistics, asset management, and road safety
- developing railway networks; sea, river and dry ports; and inland waterways
- investing in airports
- developing secondary roads
- integrating urban transport with the GMS transport network

Innovative approaches:

An Enhanced Spatial Approach to Development

- Expand the network of economic corridors, building upon transport corridors
- Development of secondary roads and riparian transport and port systems

Embracing Private Sector Solutions

- organize private sector forums in collaboration with sector working group on transport
- GMS Freight Transportation Association (FRETA) will be more actively engaged in promoting logistics and connectivity

- Endorsed at the 7th GMS Summit of Leaders on 9 September 2021.
- The COVID-19 Plan will **supplement the GMS-2030**, and has **three strategic pillars**:

Pillar 1	Pillar 2	Pillar 3
<p>Protecting lives: A One Health approach</p>	<p>Protecting the vulnerable and poor</p>	<p>Keeping borders open & accelerating economic activity</p>
<ol style="list-style-type: none"> 1. Healthy people 2. Healthy animals, crops and food products 3. Healthy city environments 	<ol style="list-style-type: none"> 1. Protect and offer opportunities to the poor and vulnerable in border areas and economic corridors 2. Safe and orderly labor movement & management 	<ol style="list-style-type: none"> 1. Improved transport and trade facilitation 2. Rebuilding agricultural trade 3. Safe and seamless GMS tourism

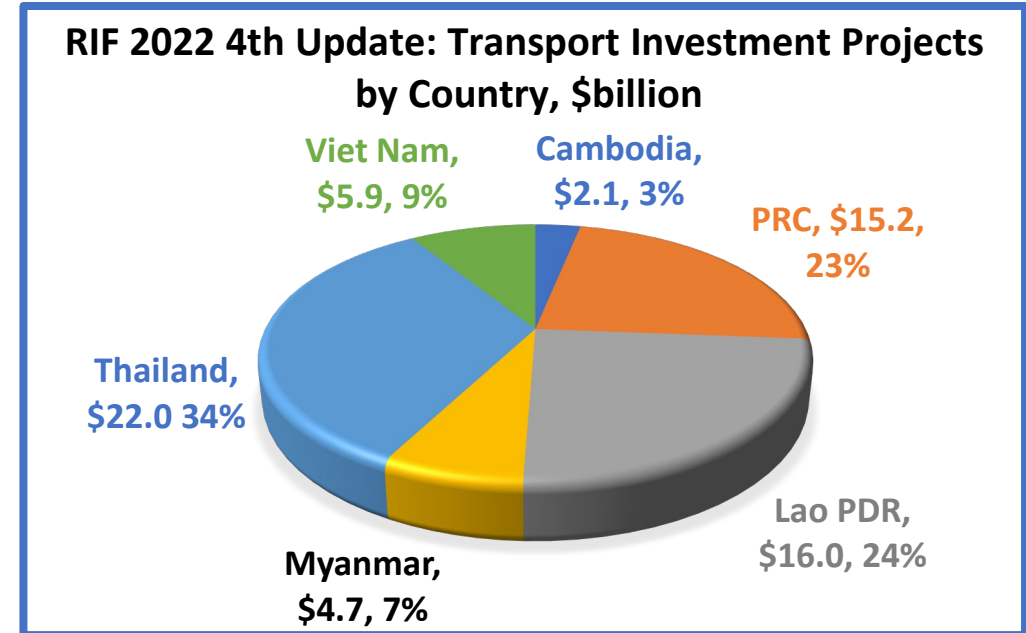
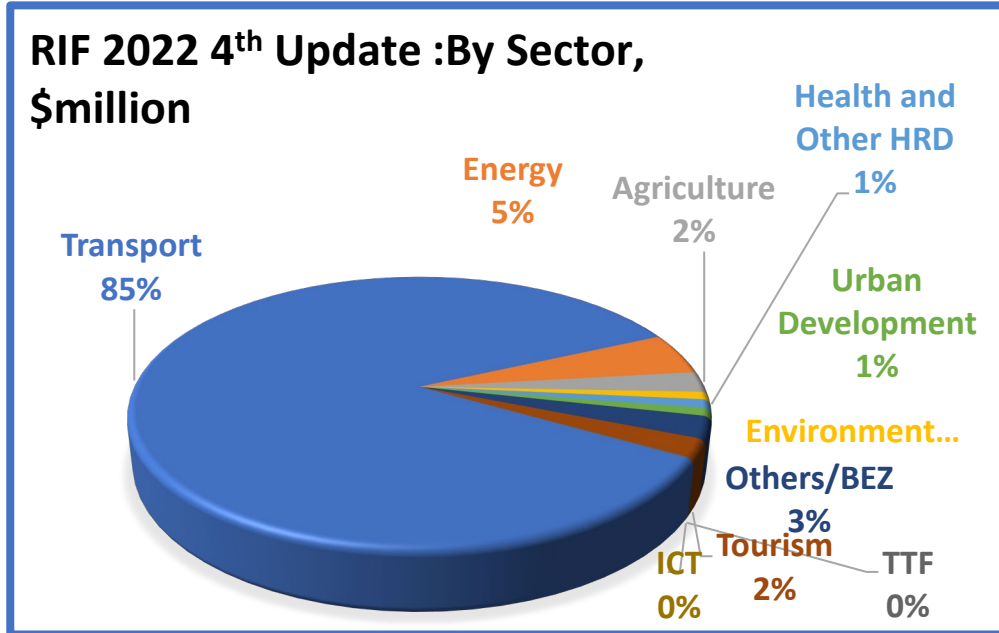
Pillar 3: Keeping Borders Open and Accelerating Inclusive Economic Activity

- calls for improved transport and trade facilitation through:
 - increased transparency and improved notification;
 - improved communication (Among NTFC focal points);
 - enhance communication and integration of changes in border arrangements; and
 - enhance cooperation to ensure the smooth flow of goods (interim transit arrangements, custom modernization, etc.)

- promote healthy, safety, and security requirements on public transport and non-motorized modes of transport

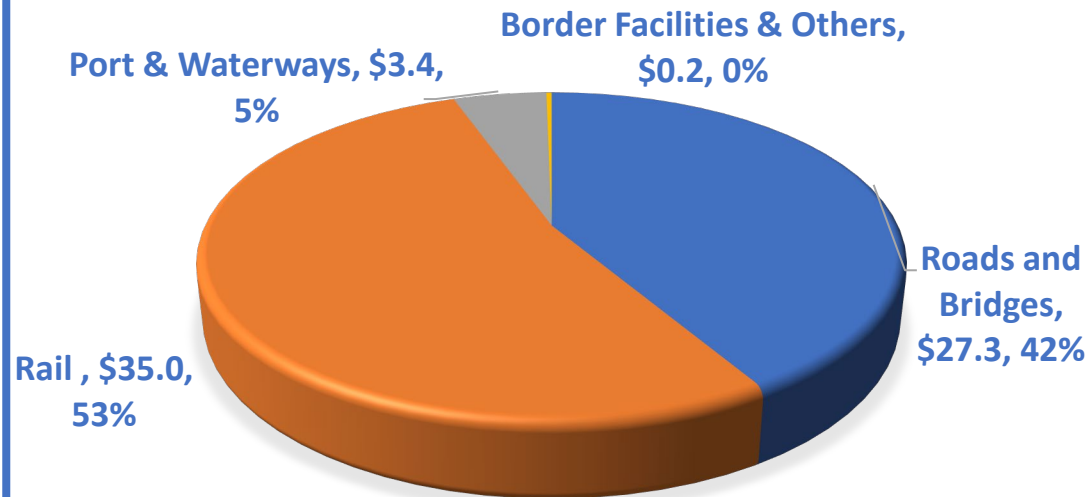
- emphasize health and safety measures at construction sites, ensuring a hygiene-conscious design for GMS transport projects

Vision	Seamless, efficient, reliable and sustainable GMS transport system		
Strategic Thrusts	<ul style="list-style-type: none"> • Completing the economic corridor network and improving links with SA & SEA • Facilitating cross-border transport • Strengthening intermodal links • Promoting the development of logistics • Improving road asset management • Enhancing road safety 		
Cross-cutting	Environmental and social concerns, private sector participation, capacity building		
Operational priorities	<ul style="list-style-type: none"> • Roads • Railway • Airports 	<ul style="list-style-type: none"> • Ports and in-land waterways • Urban transport 	<ul style="list-style-type: none"> • Transport facilitation • Logistics
Implementation, monitoring & evaluation	<ul style="list-style-type: none"> • Translating strategy into programs and projects • Financing • Implementation arrangements and mechanisms • M&E system 		

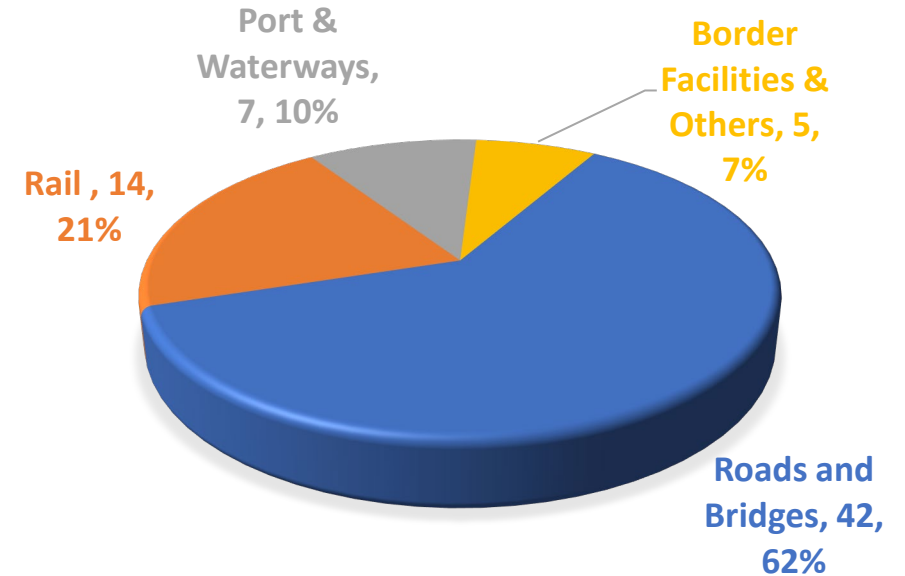


- Makes up 85% of total cost estimate of RIF 2022 (78 projects valued at \$65.8 billion)
- ☐ 68 Investment Projects= \$ 65.8 billion
 - 11 projects completed= \$ 2.0 billion
 - 35 projects ongoing = \$48.8 billion
 - 22 projects proposed = \$15.0 billion
 - 46 projects with financing (69%) =\$50.6 billion
- ☐ 10 Technical Assistance (TAs)= \$ 8.8 million
 - 3 projects completed= \$ 3.3 million
 - 5 projects ongoing = \$ 5.5 million
 - 2 projects proposed = \$ 0.0 million
 - 8 projects with financing (80%)= \$8.8 million

RIF 2022 4th Update: Transport Investment Projects
by Subsector, \$ billion



RIF 2022 4th Update: Transport Investment Projects
by Subsector, No. of Projects



Background and Rationale for a New RIF



RIF 2022 Fourth Progress Report and Update: **205 projects** worth **\$77.6 billion**

- 63% completed or commenced, and \$59 billion (or 76%) of total funding secured.
- Still \$18.6 billion in unfunded projects, 75 projects not yet commenced.
- Limited projects by private sectors or DPs



A new pipeline of projects to support the strategic and operational priorities of **GMS-2030**



Projects-based development remains a comparative advantage of the GMS Program.



Leaders mandated to develop a **realistic and implementable pipeline of projects**



Mobilize **greater financing** from development partners and the private sector.

Developing a New RIF Criteria

Minimum Criteria

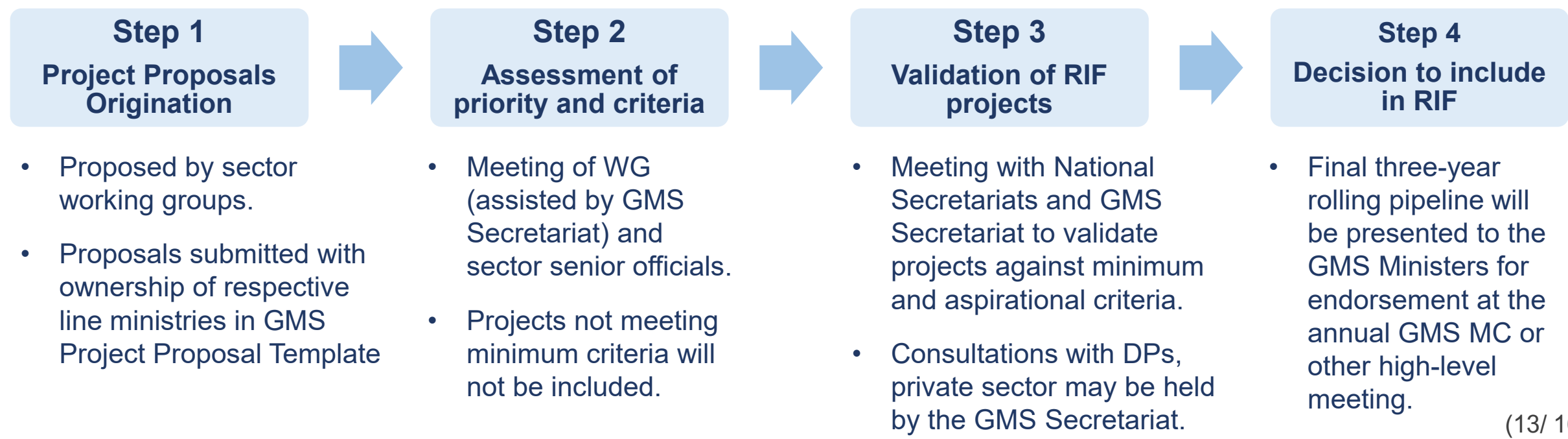
- ✓ **basic identification** project criteria (title, ministry, outcome, outputs);
- ✓ **regional impact** or spillover effect;
- ✓ **supported by active sectors** of cooperation under the GMS program (e.g., Working Group);
- ✓ **aligned with GMS** regional and/or national and sector **strategies**;
- ✓ **meet minimum standards of project readiness** and project preparation such as having strong project ownership and a clear project sponsor and having stages of project preparation completed (feasibility study complete, possible source of financing identified, project is included in national investment plans).

Aspirational Criteria

- ✓ **multi-country** projects with **regional benefits**;
- ✓ support **spatial development** (ECD, city clusters);
- ✓ **private sector** participation;
- ✓ strong **gender** elements;
- ✓ **green projects**, or support the blue economy;
- ✓ target **poverty alleviation**/reduction;
- ✓ align with international principles for **quality infrastructure**;
- ✓ foster **digitalization**.

Process for Proposing, Reviewing, and Approving RIF Projects

- The RIF will become a **three-year rolling pipeline**, starting with RIF 2023–2025, and extended forward each year with updated projects to add or drop from the pipeline.
- The **progress monitoring will become a separate report** and link with the reporting for the GMS Results Framework.
- The **GMS Secretariat will support the RIF process through capacity building, forums and roundtables.**



Timeline

Timeline 2022	Milestone/Event	Notes
30 June	GMS SOM endorses RIF criteria and process	-
1 July	Official kickoff letter to GMS WGs and National Secretariat	-
1-21 July (~3 weeks)	Working groups generate project proposals National Secretariats consider other projects that do not have a GMS WG	Optional capacity building sessions on proposal completion may be requested and scheduled.
22-29 July (1 week)	WGs review sector proposals, assess project priority and RIF criteria Submit final sector list to GMS Secretariat	-
1- 15 August (2 weeks)	National Secretariats chair a meeting with line ministries to review all sector proposals; validate and prioritize investments	GMS Secretariat consults in parallel with development partners and private sector
22 August	Consolidated RIF 3-year rolling pipeline is circulated to GMS Senior Officials prior to further endorsement by GMS Ministers	-
September/ October	RIF 3-year rolling pipeline is endorsed by GMS Ministers	-
Q4	GMS RIF is publicly disseminated for programming of projects in 2023	-

- 1. Please share your views on the priorities defined for transport sector under GMS-2030 and GMS COVID-19 Plan**
- 2. Please share any ongoing and planned initiatives that support GMS-2030 and GMS COVID-19 Plan**
- 3. Please share your views on any specific actions and initiatives which the GMS Program should work on in the short, medium and long term**
- 4. Please share your views on the proposed criteria and process for generation of the new RIF?**



Thank you!

For more information:

GMS Secretariat, Southeast Asia Department, Asian Development Bank

6 ADB Avenue, Mandaluyong City, 1550 Metro Manila, Philippines

Fax: +63 2 636 2226, Email: gms@adb.org

Web addresses: <https://www.adb.org/countries/gms/main>; <https://www.greatermekong.org/>

